

FumeFree



FumeFree Compact Welding Portable Owner Manual

(FF-B25-B01F0102– 115/1/60)

(FF-B25-B02F0102– 230/1/50-60)

For more information, contact FumeFree:

+1-800-347-6780
info@fumefree.net

5, 1099 Commerce Way,
Woodstock, ON, N4V 0A2, Canada

www.fumefree.net

FumeFree COMPACT WELDING PORTABLE

This manual describes the operation and installation of the FumeFree Compact Welding Portable and is the property of the purchaser. It has to be included with the system when set-up and start-up are completed. It is required to read and follow guidelines and procedures in order to obtain maximum efficiency and results. FumeFree reserves the right to change design and specifications without prior notice.

SYSTEM DESCRIPTION

The FumeFree Compact Welding Portable is an ideal and affordable solution for the harmful effects of welding fumes. This system features initial spark arrestor baffle and after 8" x 12" cartridge filter which provides high end filtration to keep your system operating at a high level throughout the working day.

RECEIVING INSTRUCTIONS

Upon receiving your new FumeFree Compact Welding Portable, inspect all parts for damage. Any damage observed should be recorded and damage claims filed with carrier. Also note if any parts are missing. Should you require any assistance or have any questions about your vacuum system, please contact your FumeFree representative.

IMPORTANT SAFETY INSTRUCTIONS

It is important you read and understand this section. The information it contains relates to protecting your safety and preventing problems.

- 1) System is only to be used by a person who has been instructed in its correct usage and explicitly commissioned with the task of operating it.
- 2) Ensure that the receptacle used for plugging in the system is grounded. The upper section of the system contains live components. Contact with live components leads to serious or even fatal injuries. Never spray water onto the upper section of the machine.
- 3) Do not use with damaged cord or plug. If the electrical cord is damaged, it must be replaced by an authorized distributor or similar qualified person to avoid hazard. Do not pull or carry the machine by the cord.
- 4) Do not use with damaged cord or plug. If the electrical cord is damaged, it must be replaced by an authorized distributor or similar qualified person to avoid hazard. Do not handle the plug or cord with wet hands.
- 5) Switch off the system and disconnect main plug prior to cleaning, servicing or replacing components. Also switch off the system if any dust or liquid is escaping out of the unit. Turn off all controls before unplugging system.
- 6) Never use the system without a filter.
- 7) Keep hair, loose clothing, fingers and all parts of the body away from opening or moving parts.
- 8) Do not use in outside areas with low temperatures.
- 9) Vacuuming up hazardous materials can lead to serious or even fatal injuries. The following materials must not be picked up by the machine:
 - Hot materials (i.e. ash, burning cigarettes, etc)
 - Flammable, explosive and corrosive liquids (i.e. petrol, solvents, acids, alkalis, etc)
 - Flammable and explosive dust (i.e. magnesium, aluminum , etc)

ELECTRICAL REQUIREMENTS

HP	SUPPLY	FULL LOAD	CIRCUIT REQUIRED
2.5	115/1/60	13.5 amps	15 amps
2.5	230/1/50-60	7.2 amps	15 amps



SYSTEM SET UP

Carefully remove system from packaging/skid. Install four wheels that are shipped separately (Inside the dust tray) and wheel portable to intended work area.

OPERATION

You are now ready to use your new FumeFree Welding Portable. Plug main power cord into a dedicated 15A 120V circuit. There can be no other electrical equipment plugged into this circuit. Vacuum system requires all of the power and additional electrical components plugged into the circuit may blow the fuses/circuit breaker in your main power supply.

Plug vacuum hose into the vacuum system inlet and the other end into the vacuum port of the Falcon source capture MIG gun. Turn vacuum system on and begin the vacuuming process.

If you find that the vacuum is not quite right for your application, you can easily adjust the performance higher or lower via the manual speed dial located on the motor head using the airflow meter provided in the kit.



MAINTENANCE

Canister Maintenance:

To ensure proper function and long life of your FumeFree Compact Welding Portable, the collection canister must be maintained on a daily basis (or every 8 hours of use).

1. Empty canister by unlatching the collection canister from the main body of the vacuum system.
2. Gently set aside main body and remove gasket.
3. Empty the canister of its accumulated particulate into a suitable bag or container.
4. Re-install gasket assembly to the canister. Make sure that gasket lines up 100% with rim of bottom can (**failure to do so will result in poor performance and premature wear of gasket and latches**).
5. Take main body and place on upper portion of the gasket, once again ensuring it 100% lines up.
6. Secure canister to main body by lining up the two latches with the strikers above and pulling down till they clamp into place.



Filter Maintenance:

1. Unclamp motor housing and set aside.
2. Unscrew knobs, remove top plate and then slowly remove filter from main body.
3. Once filter is removed, hold it inside a garbage can and gently bang edge of bottom plate of filter against garbage can. Continue until all dirt is dislodged. If further filter cleaning is necessary, the use of compressed air can be effective, however be careful not to place compressed air gun too close to the filter media as it may cause damage.

***Note:** Other methods that physically contact the filter can damage/abrade filter media and often will not get the filter clean. FumeFree does not recommend the filter be cleaned by “brushing” it as this will destroy the filter fibers and reduce filtration efficiency. “Brushing” does not remove the impregnated dust and eventually will need to be cleaned thoroughly with compressed air anyway.*

4. Once filter has been cleaned, re-install filter into vacuum system making sure it is properly centered, and re-attach filter plate and motor housing. Make sure that gasket on motor housing is clean and free of any debris before reinstalling.



Filter Replacement:

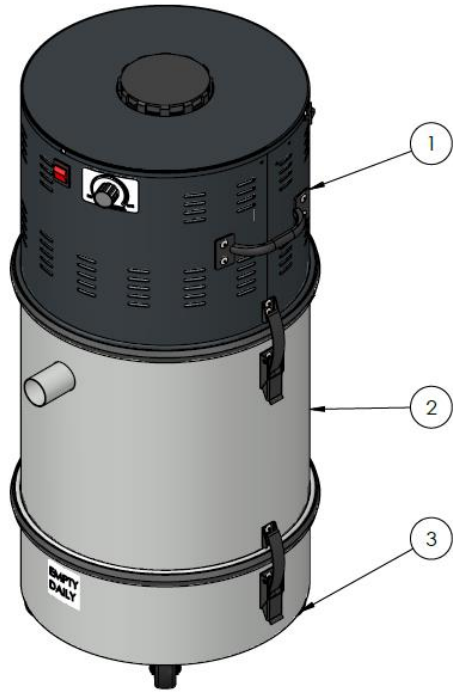
If filter becomes completely clogged and will not come clean, it will be necessary to replace filter. Filter should be replaced every 4-8 months depending on usage and can be purchased from your FumeFree distributor. Your new filter must have the same gasket as the one attached to the filter that came with your unit. Attach filter in reverse order of removal.

Installation of Replacement Carbon Brushes (when needed):

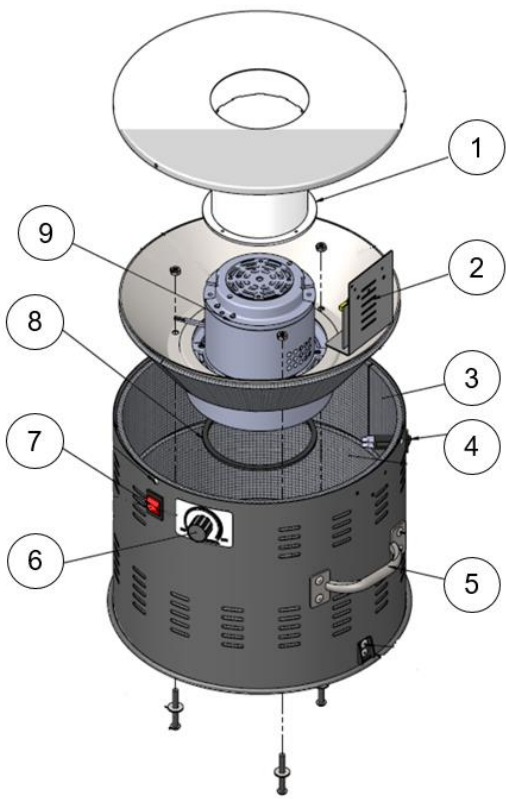
1. Remove filter (two screws) then the top crown of power unit which is held by three screws.
2. Disconnect wiring to motor and mark wires noting where to reconnect wires after brush replacement has been completed.
3. Locate the two screws that secure the top mounting cowl of the motor and mark the position of the screws in the slots of the cowl.
4. Remove top mounting cowl of motor which is held by two screws.
5. Remove load spring.
6. Remove top bearing disc.
7. Mark the position of the field coil on one of the support posts to insure proper reassembly.
8. Lift wrap around band up and over field coil and bearing. To get more room to lift band, feed wires back through plastic bushing.
9. Remove two brush clamp screws and the brush clamp.
10. To remove clip from carbon brush holder (see pictures below): Use pliers on clip lead and wiggle back and forth until there is as little space in between the carbon brush holder and the wire which is fastened to the clip.
11. Use a flat blade screwdriver. Put blade in between holder and wire and pry forward until you can remove clip with pliers.
12. If the above step does not work, you must break the plastic holder for the carbon brush to retrieve clip and wire from old holder.
13. Install clip in new brush holder and reassemble in the reverse order described above using the marks to align the field coil and top mounting cowl properly. And finally mount the filter unit to the top of the motor.



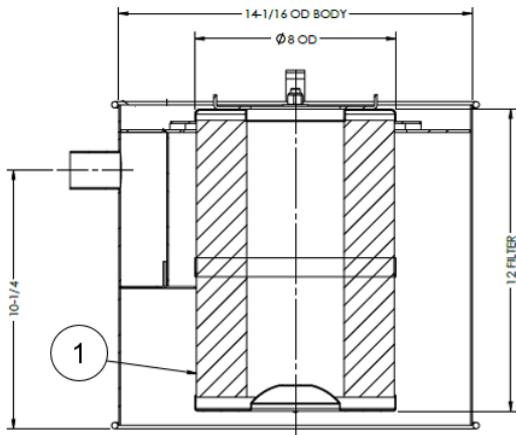
REPLACEMENT PARTS LIST



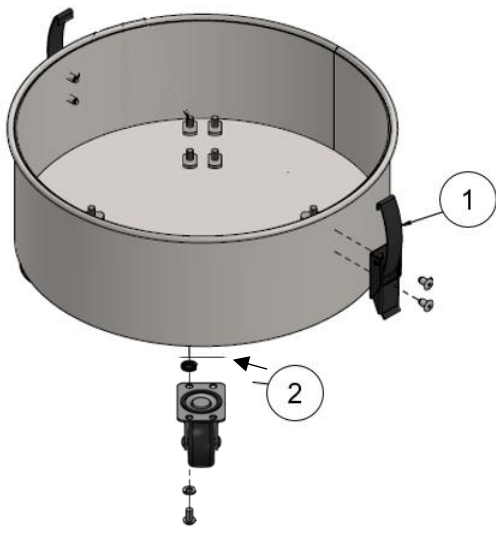
	DESCRIPTION	PART NUMBER	QTY:
1	Motor Housing	FF100MH1	1
2	Filter Body Assembly	FF100BA1	1
3	(14 x 5) 3 Gal. Canister	FF100DC1	1



	DESCRIPTION	PART NUMBER	QTY:
1	High Freq. Inlet Muffler	BLO-JBD-FT202900	1
2	1 Motor Dual 120/240 Speed Controller	CPA-EII-1M120SC0	4
3	Strip Muffler 4.5" x 41" Charcoal Ester	HAR-ENG-SM134CE0	2
4	15A Circuit Breaker	ELE-FBD-03464000	1
5	6-1/2" Pressed Steel Handle Black	HAR-FAU-45155660	2
6	Speed Controller	CPA-SPC-01150151	1
7	Rocker Switch ON/OFF/AUTO	ELE-TOR-CRTPLX33	1
8	1/8" x 1/2" Foam strip PSB Gasket	HAR-GUS-P1512050	20"
9	Brush Motor	CALL FUMEFREE	1



	DESCRIPTION	PART NUMBER	QTY:
1	8" x 12" Polyester Cartridge Filter (FF100)	FFIL-050-126P0000	1



	DESCRIPTION	PART NUMBER	QTY:
1	2.25"L Draw Latch Lever UP Black	HAR-PAR-215140BK	2
2	2" SW Casters W/polypropylene wheel	HAR-COL-94589000	2
2	2" SW Casters W/polypropylene wheel Brake	HAR-COL-90071000	2

WARRANTY

General Limited Warranty on Equipment: Subject to the terms and conditions set forth herein, Translas Canada Industries Ltd. o/a FumeFree (“FumeFree”) warrants to the original purchaser (“Purchaser”) of FumeFree central vacuum systems (the “Equipment”) that, for a period of one (1) year from the date of shipment (the “General Warranty Period”), the Equipment will be free from material defects in parts and workmanship.

Limited Warranty on Services: Subject to the terms and conditions set forth herein, FumeFree warrants to a Purchaser of installation services (the “Services”) that it shall perform the Services in a professional and workmanlike manner in accordance with industry standards for similar services (the “Services Limited Warranty”) and that such Services shall be warranted for a period of one (1) year from the final date of installation.

Limited Warranty on Powdercoat: Subject to the terms and conditions set forth herein, the Company warrants to Dealer, for a period of one (1) year from the final date of installation that the powder coat will be free from material defects. FumeFree will not be responsible for discoloration due to heat, rusting caused by chips or gouges on the powder coating surface, damage caused by improper use by customers or the owner or, damage caused by the use of abrasive cleaners, bleach or chemicals, and color fade as a result of exposure to ultraviolet light and other environmental conditions. In an effort to maximize the color and gloss retention characteristics, FumeFree uses the most advanced powder coat finishes available. FumeFree will not be responsible for the fading, color degradation, or other finish imperfections, which arise after installation as a result of the customer’s, color selection.

Limitations and Exclusions: The General Limited Warranty and the Limited Services Warranty (collectively the “Limited Warranties”) are only available to the original Purchaser and none of them are transferrable. The Limited Warranties do not cover any of the following: normal wear and tear; damage or accidents resulting from freight damage; damage or accidents arising from failure to follow precautionary safety measures; abuse, misuse or modification of the Equipment; improper electrical connections; misapplication; improper installation (if not installed by FumeFree authorized installer); connection to other equipment not manufactured by FumeFree; dismantling or attempts to repair Equipment by any person not factory-trained and certified by FumeFree, or any defects, damage or other harm that is not the result of the acts or omissions of FumeFree. Routine maintenance of the Equipment is required. Purchaser and its representatives are solely responsible for testing and determining the suitability of the Equipment for the intended use and purpose, even if FumeFree may have suggested the Equipment, FumeFree assumes no responsibility for use of the Equipment outside of the normal course of business or unintended use of the Equipment.

Remedies and Procedures: In the event of a breach of the General Limited Warranty which FumeFree determines to be covered by an applicable Limited Warranty, FumeFree will, at its option, replace or repair the defective Equipment or components as applicable. Any claim regarding breach of a Limited Warranty must be received by FumeFree before the expiration of the applicable warranty period. FumeFree reserves the right to inspect and investigate the alleged breach prior to any remedy being provided.

FumeFree may require Purchaser to return the allegedly defective Equipment or components to FumeFree’s factory for inspection, or FumeFree may elect to ship a new part to Purchaser; in either case, Purchaser is responsible for freight. If FumeFree determines that the claims are not covered by any applicable Limited Warranty, Purchaser will be notified and will be provided with the cost of repairs, replacement or re-performance, as applicable. FumeFree reserves the right to charge reasonable amounts for travel and labor associated with investigation of invalid claims. Exclusive Remedies; Disclaimer: The Limited Warranties and the remedies set forth above are the sole and exclusive warranties and remedies for a breach therefore, and FumeFree shall have no other liability to Purchaser or any other person or entity. Any efforts by FumeFree beyond the obligations provided for herein will not in any way change the limitation of remedies and damages stated in this Limited Warranty, and no agent, reseller, or other representative of FumeFree is authorized to change any warranty, expressed or implied of FumeFree. To the extent permitted by law, all express and implied warranties (including implied warranties of merchantability, fitness for a particular purpose and non-infringement) other than the express limited warranties set forth above are expressly disclaimed. Upon the expiration of the applicable limited warranty period, any and all applicable implied warranties are disclaimed.

Limitations of Liability: FumeFree shall not have any liability to purchaser or any other person or entity for incidental, consequential, indirect or special damages of any description, including without limitation, loss of revenue or lost profits, whether arising out of warranty (including any implied warranties), breach of contract, strict liability, negligence, other tort, or otherwise, and regardless of whether such damage was foreseeable and whether FumeFree had been advised of the possibility of such damages, and notwithstanding the failure of any agreed or other remedy of its essential purpose. In no event will FumeFree’s aggregate liability arising out of related to the equipment or services, as applicable, sold to purchaser, exceed the total amounts paid by purchaser for the equipment or services, as applicable.

In no event shall Translas Canada Industries Ltd. o/a FumeFree or its authorized dealer be liable for damages or bodily injury caused by improper installation, maintenance or improper use of the FumeFree product.